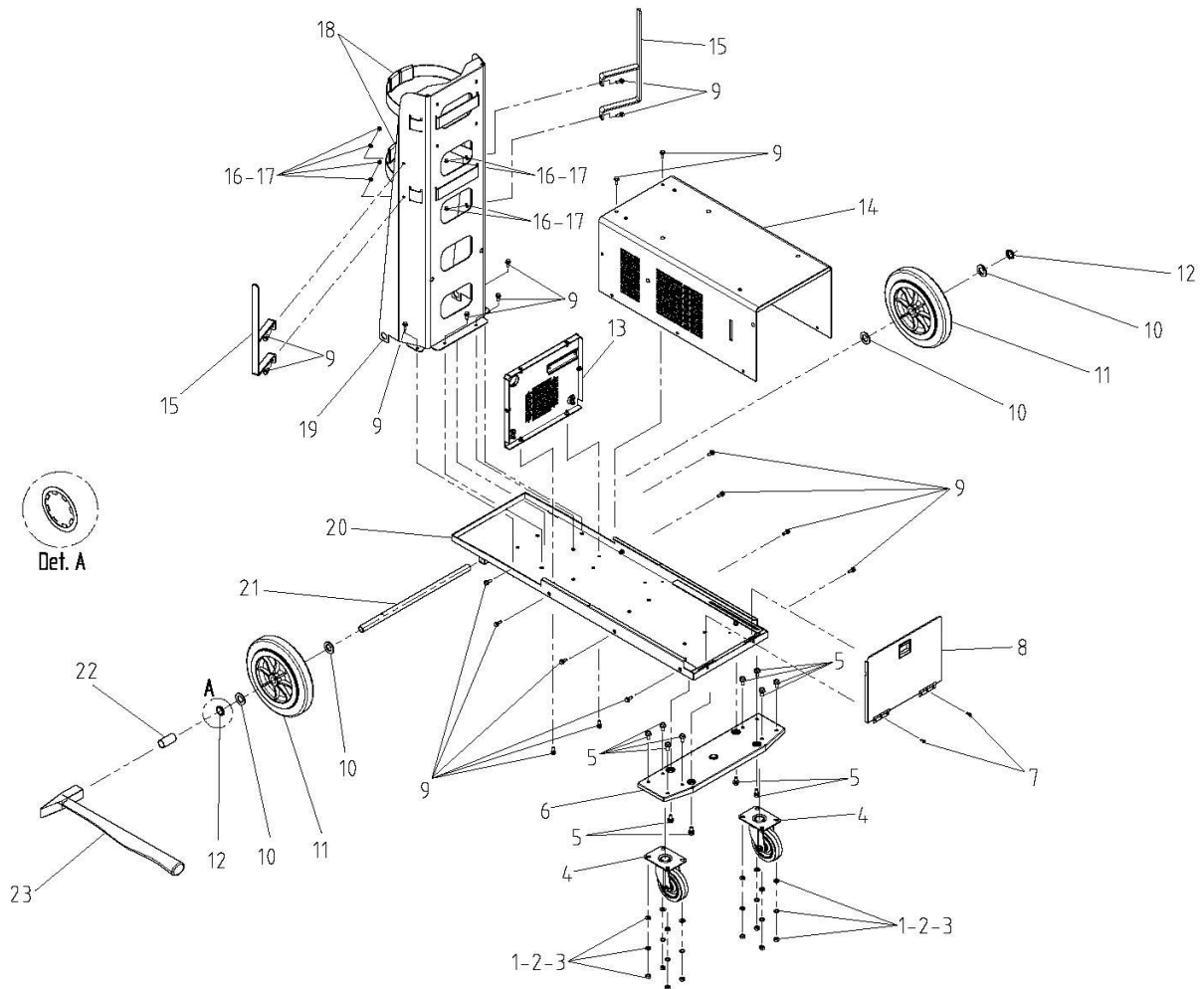


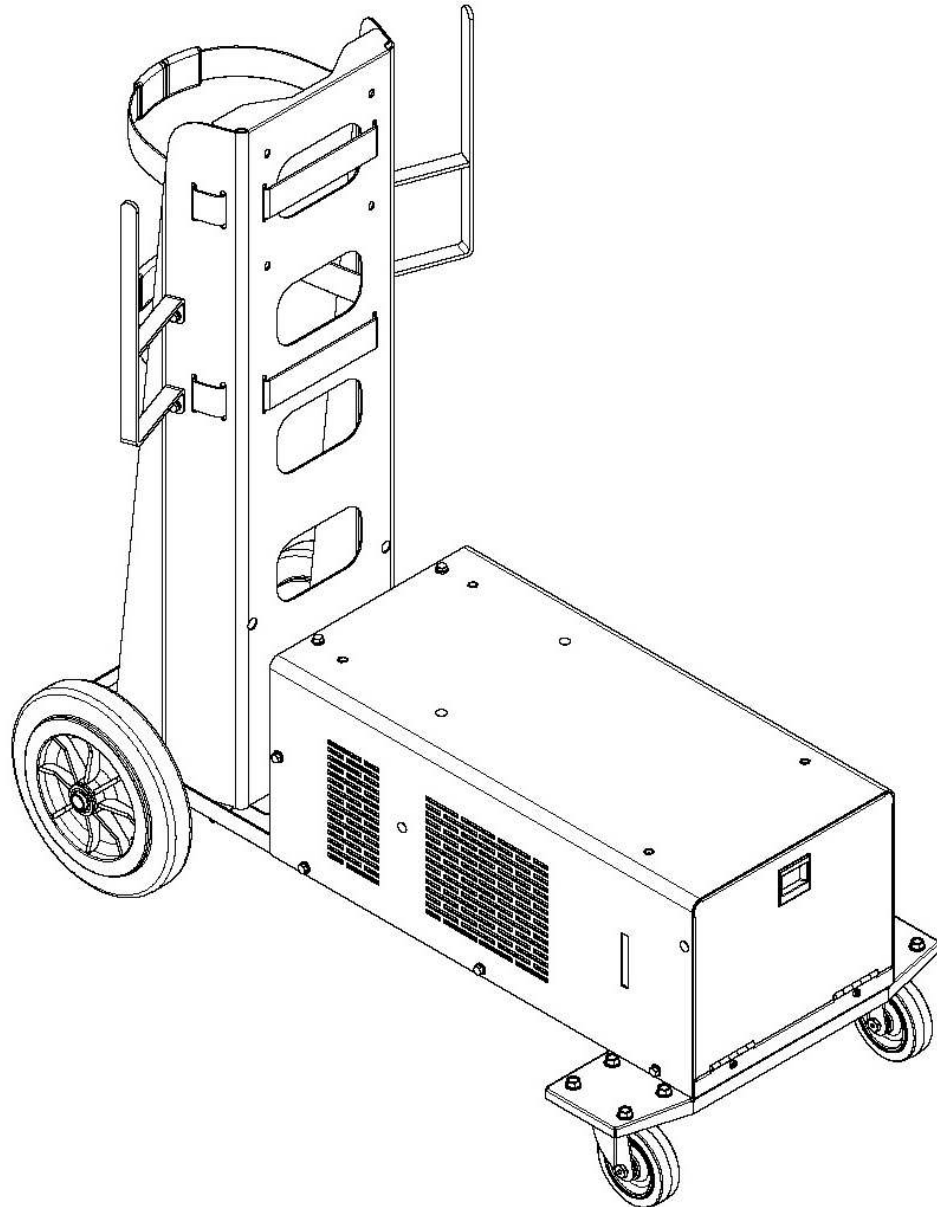


# TROLLEY ASSEMBLY INSTRUCTION



- |    |   |                  |    |   |                     |
|----|---|------------------|----|---|---------------------|
| 1  |  | NUT M8           | 12 |  | WASHER SEEGER d.20  |
| 2  |  | LOCK WASHER M8   | 13 |   | REAR PANEL          |
| 3  |  | FLAT WASHER M8   | 14 |   | COVER               |
| 4  |   | WHEEL d.100      | 15 |   | CABLES HOLDER       |
| 5  |  | SCREW M8x16      | 16 |  | FLAT WASHER M6      |
| 6  |   | FRONT WHEEL AXLE | 17 |  | NUT M6              |
| 7  |  | SCREW M5 TORCX   | 18 |   | BELT                |
| 8  |   | DOOR PANEL       | 19 |   | GAS CILINDER HOLDER |
| 9  |  | SCREW M6x16      | 20 |   | BASE                |
| 10 |  | WASHER M20       | 21 |   | REAR WHEEL AXLE     |
| 11 |   | WHEEL d.250      | 22 |   | PIPE                |
|    |   |                  | 23 |   | HAMMER              |

# TROLLEY ASSEMBLY INSTRUCTION



## ASSEMBLY SEQUENCE

- 1\_Install the gas cilinder holder (19\*) on the base (20\*) with 4 screws M6 (9\*).
- 2\_Install the rear wheel axle (21\*) and place wheels with wahers 10\* and 12\*.
- 3\_Install the wheels (4\*) on the front wheel axle(6\*).
- 4\_Install the assembly front wheel axle with screw M8 (5\*)
- 5\_Install the Rear Panel (13\*) on the base with screws M6 (9\*)
- 6\_Install the the cover (14\*) on the base with screws M6 (9\*)
- 7\_Install the Door Panel (8\*) on the base with screws M5 (7\*) in case there is not the cooler.
- 8\_Install Cable Holders (15\*) with nuts (9-16-17\*)
- 9\_Install the 2 belts (18\*) on the Gas Cilinder Holder. Both Belts are required.

\*Numbers refer to the exploded view at page1